

INDUSTRIAL EXHAUST/ BLOWER RANGE



WHO WE ARE



It is a contemporary engineering brand producing diverse industrial cooling and ventilation products. With over 30 years of industry expertise, we offer comprehensive end-to-end solutions from the research and development phase to the final product development, logistics support, and everything in between. We strive to create the best products for our customers by giving better value and quality than our competitors.

100%

IN-HOUSE PRODUCTION

To uphold the highest standards of quality. This approach allows us to closely monitor every stage of manufacturing closely, ensuring superior products for our customers.



GLOBAL PRESENCE:

International Reach: **ACTIONAIRE** serves a global clientele, exporting our products to clients across the globe. Our key export destinations include the **UAE, USA, SOUTH AFRICA, SINGAPORE, HONGKONG, JAPAN, INDIA, VIETNAM** and various other countries.

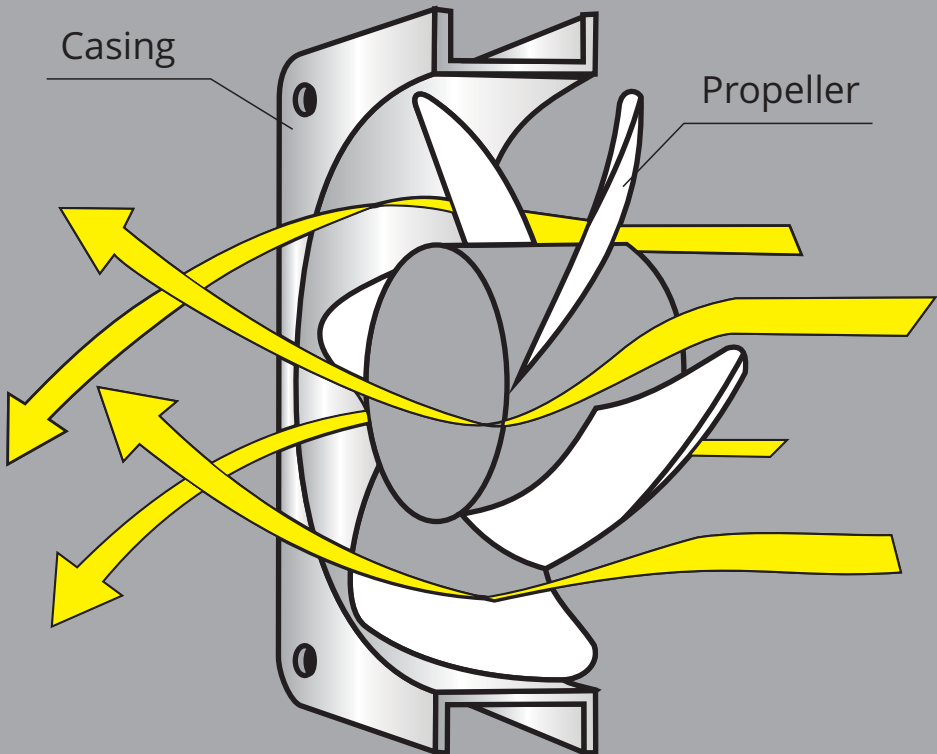
IDEAL FOR

Our fans are suitable for various settings, including factories, restaurants, railways, airports, hotels, stadiums, schools, hospitals, warehouses, and gyms, providing efficient ventilation and airflow wherever they are installed.



STRUCTURE

AIR FLOW MECHANISM OF EXHAUST FAN



Business Timeline

1991

Founded as a complete engineering facility with stamping products in NOIDA, UP

1

1997

Started supplies of Industrial Fans to North American market

2

2005

ActionAire got introduced to Singapore market, attracting users like Universal Studios.

3

2010

Softly launched in India, became Northern Railways preferred vendor within one year

4

2012

ActionAire successfully starts supplies to direct industrial customers-soon adds big corporates like Honda, Hero, Tata

5

2015

ActionAire is preferred brand by restaurants and hotels- for its wide variety of weatherproof products ideal for misting

6

2018

New state of the art manufacturing facility opened in Gujarat with latest technology

7

2020

ActionAire opens first independent showroom in Kutch, Gujarat

8

2024

Entering South Indian market with a new dealership network

9

TABLE OF CONTENTS

HEAVY DUTY EXHAUST FAN

INTRODUCTION	7-8
SPECIFICATION	9-10

AXIAL FLOW FAN

INTRODUCTION	11-12
SPECIFICATION	13-14

MANCOOLER

INTRODUCTION	15-16
SPECIFICATION	17-18

PORTABLE BLOWER

INTRODUCTION	19-20
SPECIFICATION	21-22

HANGING TYPE DRUM FAN

INTRODUCTION	23-24
SPECIFICATION	25-26



HEAVY DUTY EXHAUST FAN

Action Aire's HD exhaust Fans are heavy-duty and built for robust performance in demanding environments. Pre-lubricated double ball bearings, Class 'A' and 'E' insulation, and a dynamically balanced impeller ensure durability, safety, and smooth operation.

HEAVY DUTY EXHAUST FAN

Features

Action Aire HD Exhaust Fans: Heavy-duty performers ideal for robust ventilation needs. Equipped with pre-lubricated double ball bearings and Class 'A' and 'E' insulation for durability and safety. Dynamically balanced impeller minimizes vibrations for smooth operation.



Heavy-duty Construction: Designed to withstand harsh conditions, ensuring long-lasting performance.



Pre-lubricated Double Ball Bearings: Enhances durability and ensures smooth operation.



Dynamically Balanced Impeller: Minimizes vibration for quiet and efficient operation.



Propeller Type Design: Maximizes airflow efficiency.



Rubber Bushings: Eliminate vibrations, ensuring stability and reliability.



Versatile Applications: Suitable for a wide range of industrial and commercial settings.



Enhanced Airflow: Efficiently removes stale air and odors from enclosed spaces.

HEAVY DUTY EXHAUST FAN



HEAVY DUTY

EXHAUST FAN

Specification

SINGLE PHASE

FanDia (mm/inch)	Speed (RPM)	Input Power (Watt)	Current (Amps)	Max Free Air Delivery (m ³ /hr)	CFM	Sound Level (dB)
H/D-EF(300/12")	1400	90	0.40	1710	1000	50-55
H/D-EF(300/12")	900	50	0.21	1145	675	35-40
H/D-EF(380/15")	1400	160	0.75	3250	1910	60-65
H/D-EF(380/15")	900	90	0.40	2000	1175	50-55
H/D-EF(450/18")	1400	410	1.70	6120	3600	65-70
H/D-EF(450/18")	900	150	0.65	3900	2290	55-60
H/D-EF(600/24")	700	240	1.40	7100	4175	55-60
H/D-EF(600/24")	900	500	2.60	9400	5530	60-65

THREE PHASE

FanDia (mm/inch)	Speed (RPM)	Input Power (Watt)	Current (Amps)	Max Free Air Delivery (m ³ /hr)	CFM	Sound Level (dB)
H/D-EF(380/15")	1400	150	0.45	3250	1910	60-65
H/D-EF(380/15")	900	100	0.29	2000	1175	50-55
H/D-EF(450/18")	1400	410	0.65	6120	3600	65-70
H/D-EF(450/18")	900	150	0.30	3900	2290	55-60
H/D-EF(600/24")	700	240	0.50	7100	4175	55-60
H/D-EF(600/24")	900	500	0.85	9400	5530	60-65
H/D-EF(600/36")	700	500	2.60	28100	16530	75-80

Performance figures generally conforming to IS:2997 Due to continuous development and innovation, the above specifications are subject to change



AXIAL FLOW FAN

Features

- New design with lighter fan guard
- Ideal for places less prone to damages
- Same high strength but sleek design

AXIAL FLOW FAN

Features

Our industrial heavy-duty fans combine robust construction with powerful motors for reliable performance in any setting. With adjustable features, safety mechanisms, and customizable options, they offer durability, versatility, and style.



High Airflow: Designed to deliver large volumes of air efficiently at high speeds.



Compact Design: Streamlined structure allows installation in confined spaces.



Quiet Operation: Engineered for minimal noise compared to other fan types.



Energy Efficient: Consumes lower power while maintaining optimal performance.



Versatile Blade Options: Available in multiple blade designs to enhance speed, efficiency, and noise control.



Aerofoil Blade Design: Reduces drag and maximizes airflow efficiency.

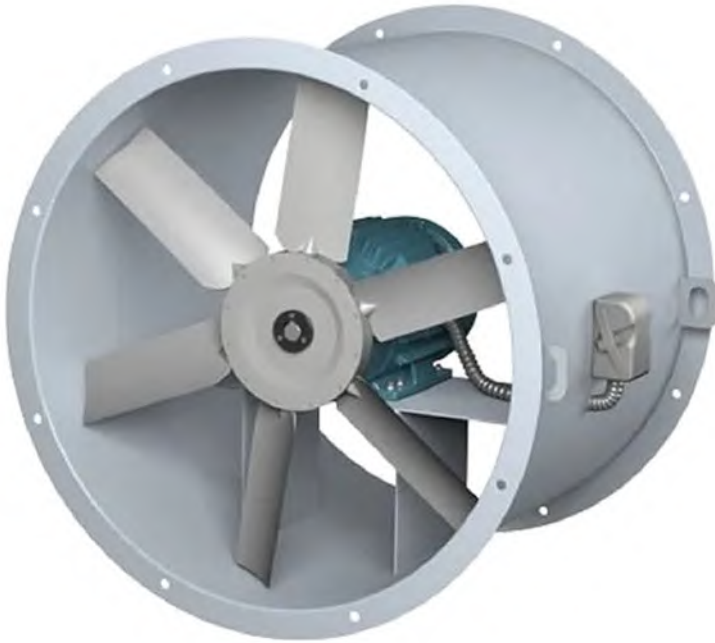


Optimized Blade Angle: Precisely engineered to enhance airflow and overall fan efficiency.



Powder-Coated Finish: Provides durability, corrosion resistance, and long-lasting performance.

AXIAL FLOW FAN



Axial Flow Fans are widely used for ventilation, pressurization, humidification, evaporative cooling towers, kitchen ventilation, fume exhaust system, dry spray paint booth, roof extractor purpose, environmental ventilation and cooling purpose.

Commonly used in:

- Commercial Application • Industrial Process • Mining Industries
- Textile Plants • Chemical Industries • Automobile Industries
- Environmental Ventilation • Warehouse • Kitchen Ventilation
- Exhaust Systems • Roof Extractors

AXIAL FLOW FAN

Specification

—AIR DELIVERY—

SNO	SIZE(MM)	PHASE	HP/RPM	CFM	M ³ /HR
1	400	1/3	0.5/1400	1800	3100
2	450	1/3	0.5/1400	2700	4500
3	500	1/3	0.5/1400	3660	6100
4	600	1/3	1/1400	6600	11000
5	700	1/3	2/1400	10500	17500
6	750	1/3	2/1400	12910	21525
7	800	3	3/1400	15600	26000
8	900	3	2/950	14400	24000
9	900	3	3/1400	22800	38000
10	1000	3	5/950	20400	34000
11	1000	3	10/1400	21000	35000
12	1200	3	10/950	36000	60000

Performance figures generally conforming to IS:2997 Due to continuous development and innovation, the above specifications are subject to change

MAN COOLER

The man cooler is engineered for superior performance and durability, featuring an aerodynamically designed impeller with a six-leaf one-piece construction that delivers high velocity and large air volume. It is powered by a TEFC (Totally Enclosed Fan Cooled) single or three-phase motor, ISI-marked and sourced from reputed brands for reliability and efficiency. For enhanced safety, the cooler is equipped with a sturdy close-mesh guard that provides excellent protection. Additionally, the option of a robust cast-iron solid base ensures stability and long-lasting performance, making it ideal for demanding industrial and commercial environments.



MAN COOLER

Features



High Airflow: Designed to deliver large volumes of air efficiently at high speeds.



Compact Design: Streamlined structure allows installation in confined spaces.



Quiet Operation: Engineered for minimal noise compared to other fan types.



Energy Efficient: Consumes lower power while maintaining optimal performance.



Aerofoil Blade Design: Reduces drag and maximizes airflow efficiency.



Optimized Blade Angle: Precisely engineered to enhance airflow and overall fan efficiency.



Easy assembly process.



Powder-coated finish for durability.



International safety standards met with fan guards.

MAN COOLER



- Motors are generally available for 415V, 3 Phase, 50Hz, AC Supply.
- Performance figure confirm to IS 6272 with tolerance mentioned therein.
- Specification are subject to change without notice due to continuous development and innovation.

MAN COOLER

Specification

SWEEP (mm/inch)	SPEED (RPM)	TOTAL AIR DELIVERY AT 10 TIMES BLADE SPEED	MINIMUM PEAK AIR VELOCITY AT A DISTANCE OF	
		M ³ /HR	10 TIMES BLADE SWEEP m/min	10 TIMES BLADE SWEEP m/min
500/20	1400	0.5/1-3	200	150
500/20	2800	2/3	250	200
600/24	1400	1/1-3	250	150
750/30	1400	2/1-3	250	150
900/36	950	2/3	250	150
900/36	1400	3/3	275	175
1000/20	950	5/3	250	150

PORTABLE BLOWER

with Duct



PORTABLE BLOWER

with Duct



Outdoor Application: Specifically designed for outdoor use, they are suitable for various environments such as gardens, patios, or open-air venues.



Weather Resistance: Built to withstand rain, dust, and high temperatures, ensuring durability and longevity even in challenging weather conditions.



Shelter-Free Installation: Ideal for locations without shelter where regular air circulators would be unsuitable due to exposure to weather elements.



Easy assembly process.



Powder-coated finish for durability.



International safety standards met with fan guards.

PORTABLE BLOWER

with Duct



PORTABLE BLOWER

with Duct

Specification

MODEL no	DIMETER (mm)	POWER (W)	VOLTAGE (Hz)	SPEED (RPM)	AIR FLOW (m ³ /h)	MOTOR
FG-30	300(12")	250	220/50	2800	3700	Full copper, VDE plug with 1.8 m power cord
FG-40	400(16")	1100	220/50	2800	11000	Full copper, VDE plug with 1.8 m power cord



5 meter Duct

HANGING DRUM TYPE

The hanging drum-type fan is a versatile and efficient solution designed for optimal performance and durability. It features a weatherproof construction, ensuring reliable operation in various environmental conditions. Its low sound and power consumption make it energy-efficient and user-friendly, while the simple design facilitates easy maintenance. The drum-type design enhances air throw, providing better airflow distribution, and its rust-resistant finish ensures long-lasting durability. With top clamping for secure installation, a robust metal body for strength, and a complete metal construction, this fan is built to withstand demanding use. Its ease of installation and minimal upkeep make it an ideal choice for both commercial and industrial applications.



HANGING DRUM TYPE

Features

Air Circulator Fans with Waterprotection Drums offer a unique solution to customers looking for outdoor fans with an oscillation featu! Our robust motor and gearbox mechanism easily house the drum without putting extra load on the motor. The drug is made with high-quality steel and finished with powder coating



Outdoor suitability: Perfect for outdoor environments such as restaurants, hotels, and clubhouses.



Efficient and quiet operation: Designed to cool outdoor areas quietly and efficiently.



Low noise levels: Ideal for places where maintaining a peaceful ambiance is essential.



Weather protection: Built to withstand rain and dust, safeguarding the fan motor.



Easy assembly process.



Powder-coated finish for durability.



Weather Resistance: Built to withstand rain, dust, and high temperatures, ensuring durability and longevity even in challenging weather conditions.

HANGING DRUM TYPE



HANGING DRUM TYPE

Specification



DRUM TYPE	MODEL	HP	RPM	WATTAGE	AIR DELIVERY
450MM, 18"	18GHDF	1/4	1400	100W	125 M3/Min
500MM, 20"	20GHDF	1/4	1400	120W	140 M3/Min
600MM, 24"	24GHDF	1/4	1400	200W	263 M3/Min

ACTIONAIRE.CO CONTACT US



+91 120 4097085



+91 85276 14600



sales@actionaire.co



www.actionaire.co

FOLLOW US ON

FACEBOOK



ACTION AIRE

INSTAGRAM



@ACTIONAIRE.CO

YOU TUBE



ACTION-AIRE

